

# JAEFX METATRADER 5 INSTALLATION

Note: **MT5 is NOT backward compatible with MT4**

1. Click on downloaded executable file **jdfx5setup.exe**



2. If you have MT4 installed please make sure you change the Path During MT5 Installation, in the following window otherwise it will Overwrite your existing MT4 installation.

By Default , here is what you will see

Installation Path: **C:\Program Files(x86)\JadeFX**

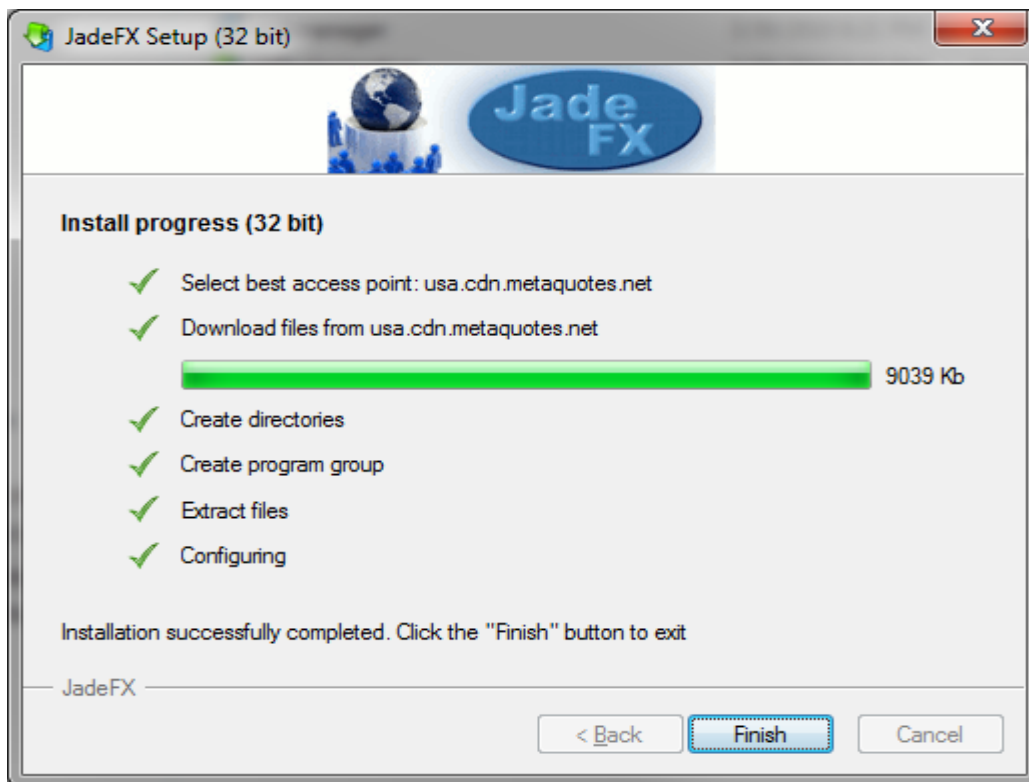
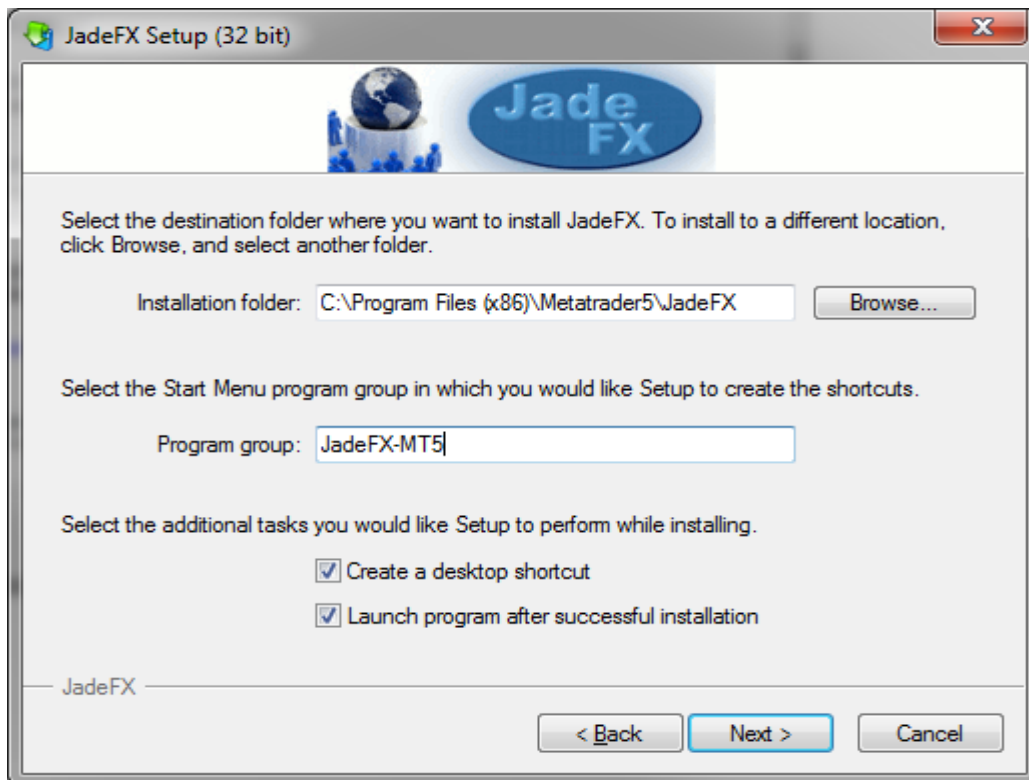
Change this to something different

**C:\Program Files(x86)\MT5\JadeFX**

Also

Program Group: **JadeFX**

Change this to something different like **JadeFX-MT5**



3. After installation, You can create a DEMO account and it will login you in automatically when it is done

**Account setting**

To start working an account is required:

To start working, you need a valid trade account. If you already have an account, select 'Use an existing trade account' and press 'Finish'. If you don't have it, you can create a demo account by selecting 'Create a new demo account' and pressing 'Next':

Use an existing trade account

Login:

Password:

Save password

Create a new demo account

Next >

Cancel